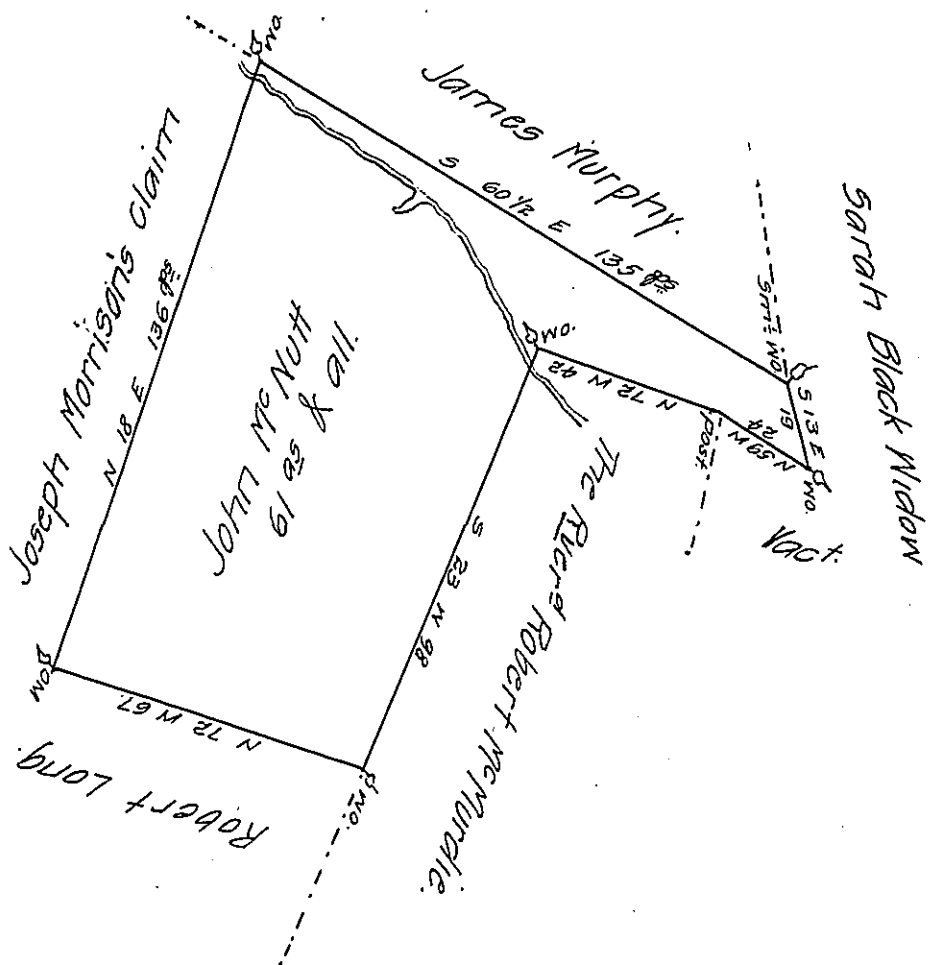


This is Eronious see another  
which is done by A. M.  
Pursuant to a Judgment



By virtue of a warrant dated the 8<sup>th</sup> day of May 1765, surveyed  
the 31<sup>st</sup> day of May 1765 unto John McNutt the above described  
Tract of land situate in Currierland Township in the Manor of  
Maske in York County, containing sixty one acres and allow  
&c.

To John Lukens Esquire  
Survey<sup>r</sup> Gen<sup>l</sup>

of Cha<sup>s</sup> Lukens  
Dep<sup>y</sup> Survey<sup>r</sup>

IN TESTIMONY that the above is a copy of the original remaining on file in  
the Department of Internal Affairs of Pennsylvania, made  
conformably to an Act of Assembly approved the 16th day of  
February, 1833, I have hereunto set my Hand and caused  
the Seal of said Department to be affixed at Harrisburg,  
this sixteenth day of May 1910.

*Henry Horvath*  
Secretary of Internal Affairs.